





ROBIN INDUSTRY CO., LIMITED

 Room1244 XinCheng Square , Jianggan district, HangZhou, Zhejiang, China. Zip Code:310021.

 lisa@robinindustry.com , robinindustry@hotmail.com

 +86-15372408270 +86-571-85241732

 Skype : robinindustry WhatsApp:+86-18268819406

 Website: www.robinindustry.com



**SHOE
REPAIR**
Materials

WHERE?



OUR PRODUCTS HAVE BEEN EXPORTED TO MORE THAN 40 COUNTRIES



ROBIN INDUSTRY CO., LIMITED



content



■ ABOUT ROBIN INDUSTRY

■ SHOE REPAIR MATERIALS

- Rubber Shoe Half Sole
- Rubber Shoe Heel
- Rubber Soling Sheet
- Lady Top Lift
- Rubber Heel Protectors

■ CONTACT US

About Robin Industry

ROBIN INDUSTRY CO.,LIMITED was founded in 2003 and Since then have maintained healthy, rapid and sustainable development in the export of shoe repair series products to the footwear and shoe repair.

ROBIN INDUSTRY provide Production & OEM & Wholesale & distribution of shoe repair finisher machine, shoe repair materials(rubber shoe half sole,rubber shoe heel,rubber soling sheet),paper insole board,shoe sewing machine, shoe stretcher machine, shoe cleaning machine, shoe expander,shoe tree, shoe brush, shoe horn, shoe insole, and other shoe related products.

Ever since established, it brings its design and products quality in line with international practice.To meet the high demands of the international guests, ROBIN INDUSTRY improve more product line of shoe repair & footwear,and all products are reasonable in price, ROBIN INDUSTRY provide more diversified services, it had help customers to save more time, and full win the trust of customers.

Up to now, ROBIN INDUSTRY had exported a series of shoe repair products to USA, UK, Canada, Poland, Mexico,Saudi Arabia, Australia, South Africa, Nigeria,Singapore, Kuwait, Sri Lanka,Oman,Cameroon and etc,

Find out more about the benefits of sourcing from shoe repair series products , Send us your inquiries today and get our catalogue.

Shoe Repair Materials

E000 MINICHECK SHOE HALF SOLE



- ▶Size: men & women
- ▶Thickness:1.0mm & 1.5mm & 1.8mm
- ▶Color: black & brown & beige & red...12colors
- ▶Material: rubber

MINICHECK RUBBER SHOE HEEL



- ▶Thickness:3.5-6.2mm
- ▶Color: black & brown & beige & red...12colors
- ▶Material: rubber

Shoe Repair Materials

E001 MAGNE SHOE HALF SOLE



- ▶ Size: H2(120x162mm, thickness2-2.2mm)
H3(130x178mm, thickness:2.3-2.5mm)
H4(135x200mm,thickness:2.3-2.5)
- ▶ Color: black & brown & beige
- ▶ Material: rubber

E004 MAGNE SHOE HEEL



- ▶ Size: 176(102mm wide)
174(96mm wide)
172(93mm wide)
170(85mm wide)
168(83mm wide)
- ▶ Color:black & brown & beige
- ▶ Material: rubber

E009 LONG LIFE SHOE HALF SOLE



- ▶ Size:H2(108x160mm, thickness2.3-2.5mm)
H3(130x186mm, thickness2.3-2.5mm)
H4(150x202mm,thickness2.3-2.5mm)
- ▶ Color:black & brown & beige
- ▶ Material: rubber

E012 LONG LIFE SHOE HEEL



- ▶ Size: small(74mm wide, thickness6.5-6.7mm)
middle(85mm wide, thickness6.5-6.7mm)
Large(96mm wide, thickness6.5-6.7mm)
- ▶ Color:black & brown & beige
- ▶ Material: rubber

Shoe Repair Materials

E015 CROWN SHOE HALF SOLE



- ▶ Size: H3(128x180mm)
- ▶ Thickness: 2.3-2.5mm
- ▶ Color:black & brown & beige

E016 CROWN SHOE HEEL



- ▶ Size: 174(96mm wide)
- ▶ Thickness: 7-7.2mm
- ▶ Color:black & brown & beige

E017 PROOF SHOE HALF SOLE



- ▶ Size:H2(130*175mm)
- ▶ Thickness:2.3-2.5mm
- ▶ Color:black & brown & beige
- ▶ Material: rubber

E019 AUS-FINE LINE SHOE HALF SOLE



- ▶ Size: H2(115x170mm, thickness2.3-2.5mm)
H3(130x185mm, thickness2.3-2.5mm)
H4(155x220mm, thickness2.3-2.5mm)
- ▶ Color:black & brown & beige
- ▶ Material: rubber

Shoe Repair Materials

E023 EUROPA SOLE



- ▶ Size: 135x192mm
- ▶ Thickness: 2.3-2.5mm
- ▶ Color: black & brown & beige
- ▶ Material: rubber

E024 EUROPA HEEL



- ▶ Size: 94mm wide
- ▶ Thickness: 6-6.2mm
- ▶ Color: black & brown & beige
- ▶ Material: rubber

E037 RUS-FINE LINE SHOE SOLE



- ▶ Size: H2(105X150mm, thickness 2.4-2.5mm)
H3(115X165mm, thickness 2.4-2.5mm)
H4(140X185mm, thickness 2.4-2.5mm)
- ▶ Color: black & brown & beige
- ▶ Material: rubber

E040 RUS-FINE LINE SHOE HEEL



- ▶ Size: Large(100mm wide, thickness 7-7.2mm)
Medium(90mm wide, thickness 7-7.2mm)
- ▶ Color: black & brown & beige
- ▶ Material: rubber

Shoe Repair Materials

E044 EUR-MEN TIMPSON SOLE



- ▶ Size: 135*180mm
- ▶ Thickness: 2.4-2.5mm
- ▶ Color: black & brown & beige
- ▶ Material: rubber

E045 EUR-WOMEN TIMPSON SOLE



- ▶ Size: 110*150mm
- ▶ Thickness: 2.4-2.5mm
- ▶ Color: black & brown & beige
- ▶ Material: rubber

E046 EUR-ALLEX SOLE



- ▶ Size: 130*185mm
- ▶ Thickness: 2.4-2.5mm
- ▶ Color: black & brown & beige
- ▶ Material: rubber

E022 APOLLO HEEL



- ▶ Size: 174(95mm wide)
- ▶ Thickness: 7-7.2mm
- ▶ Color: black & brown & beige
- ▶ Material: rubber

Shoe Repair Materials

E047 ACE POWER SOLE



- ▶ Size: 135*185mm
- ▶ Thickness: 2.4-2.5mm
- ▶ Color: black & brown & beige
- ▶ Material: rubber

E048 RUBBER SHOE HEEL



- ▶ Size: 90mm wide
- ▶ Thickness: 7.5mm
- ▶ Color: black & brown & beige
- ▶ Material: rubber

E025 TOOTH SHAPE SOLE



- ▶ Size: 125*185mm
- ▶ Thickness: 4.5-5mm
- ▶ Color: black & brown & beige
- ▶ Material: rubber

E026 TOOTH SHAPE HEEL



- ▶ Wide: 100mm,
- ▶ Thickness: 8-8.2mm
- ▶ Color: black & brown & beige
- ▶ Material: rubber

Shoe Repair Materials

WINTER RUBBER SHOE HALF SOLE



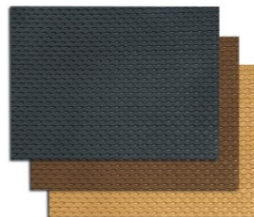
- ▶ Size: 125*185mm
- ▶ Thickness: 2mm
- ▶ Color: black & brown & beige
- ▶ Material: rubber

E180 WINTER RUBBER SOLING SHEET



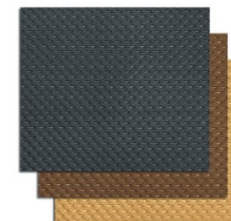
- ▶ Size: 600*600mm
- ▶ Thickness: 3mm & 4mm & 6 mm
- ▶ Color: black & Chocolate & light oak & dark oak
- ▶ Material: rubber

E107 VOLNA SHOE HEEL SHEET



- ▶ Size: 570x380mm,
- ▶ Thickness: 6mm
- ▶ Color: black & brown & beige
- ▶ Material: rubber

E105 VOLNA SHOE HALF SHEET

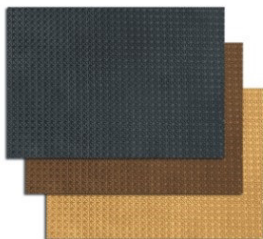


- ▶ Size: 570x380mm
- ▶ Thickness: 2mm
- ▶ Color: black & brown & beige
- ▶ Material: rubber

Shoe Repair Materials

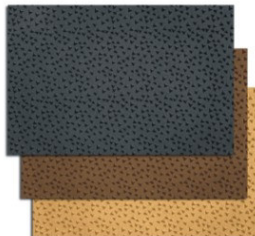


E102 CROSS SHEET



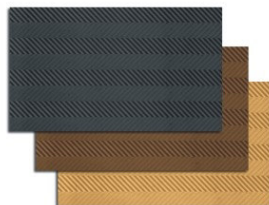
- ▶ Size:570*380mm
- ▶ Thickness:2mm
- ▶ Color: black & brown & beige
- ▶ Material: rubber

E108 SHOE HEEL SHEET



- ▶ Size:600x600mm
- ▶ Thickness:3mm
- ▶ Color: black & brown & beige
- ▶ Material: rubber

E109 SHOE HALF SOLE SHEET



- ▶ Size:600x600mm,
- ▶ Thickness:3mm
- ▶ Color: black & brown & beige
- ▶ Material: rubber

E179 RUBBER SHOE HEEL SHEET

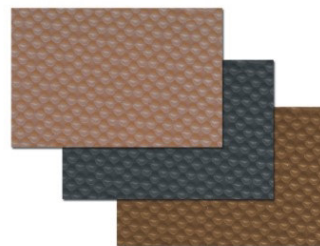


- ▶ Size:505x405mm,
- ▶ Thickness:6mm
- ▶ Color: black & brown & beige
- ▶ Material: rubber

Shoe Repair Materials

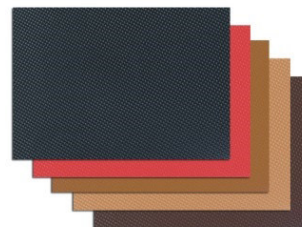


SPOT RUBBER SHEET



- ▶ Size:570x380mm
- ▶ Thickness:3mm
- ▶ Color: black & brown & beige
- ▶ Material: rubber

T692 MINICHECK RUBBER SOLING SHEET



- ▶ Size: 570*380mm,
- ▶ Thickness:1.2-2mm
- ▶ Color: black & brown & beige & red...12colors
- ▶ Material: rubber
- ▶ Note: can be cut be pair, save material

Shoe Repair Materials

LADY SINGLE TOP LIFT



► Colors : black ,beige,brown

► Thickness: 6mm

The lady singel top lift made by PU material come at a competitive price.
Noiseless, Non-slip and Abrasion-Resistance.

LADY DOUBLE TOP LIFT

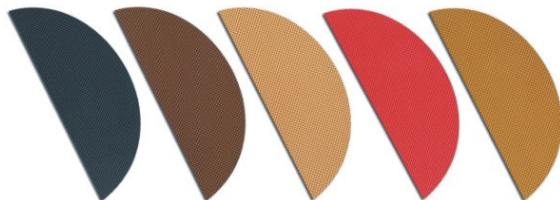


► Colors : black ,beige,brown

► Thickness: 6.5mm

The lady double top lift made by PU material come at a competitive price. Two layer structure
Noiseless, Non-slip and Abrasion-Resistance.

RUBBER HEEL PROTECTORS



► Size: 1x20pairsx8.2mm

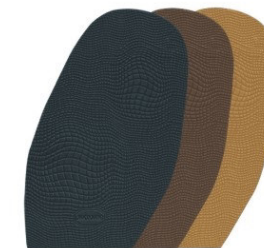
► Color: black & brown & beige & red... 12colors

► Material: rubber

► Note: it is used for protect the shoes heel

Shoe Repair Materials

NEW PRODUCTS



RC-E049 Snake Pattern Rubber Shoe Half Sole

Size: Small (155x96mm, thickness:2.2mm)
Middle (180x115mm, thickness:2.5mm)
Large (177x132mm, thickness:1.5mm)

Color: black & brown & beige

Material: rubber

RC-E052 Snake Pattern Rubber Shoe Heel

Size: 87x85mm

Thickness: 6.5mm & 3.5mm

Color: black & brown & beige

Material: rubber